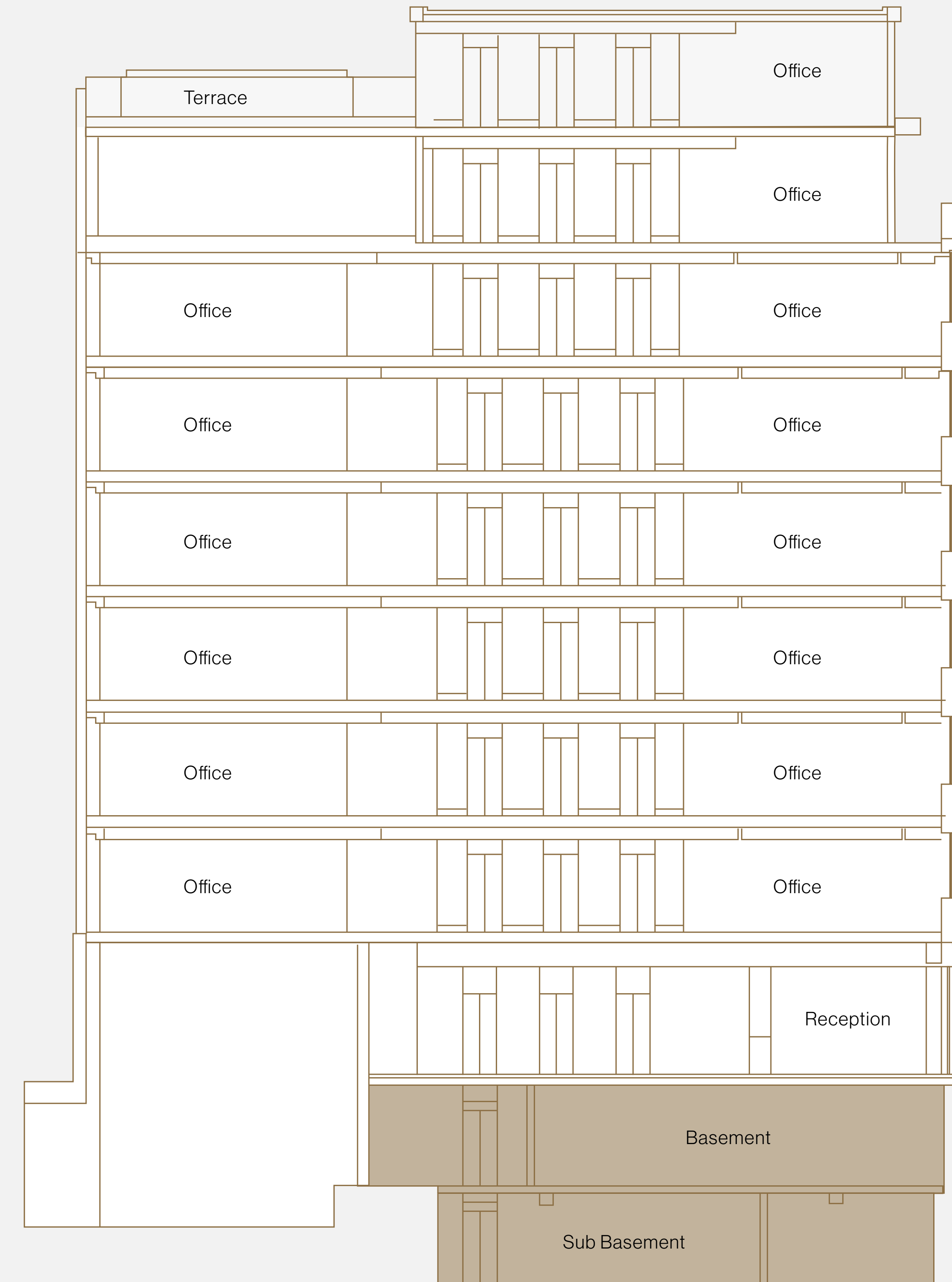


262
High
Holborn

Schedule of areas

Floor	Use	Sq ft	Sqm
Eighth (plus Terrace)	Office	LET	LET
Seventh (plus Terrace)	Office	3,517	326.7
Sixth	Office	4,676	434.4
Fifth	Office	4,678	434.6
Fourth	Office	4,625	429.7
Third	Office	4,637	430.8
Second	Office	4,631	430.2
First	Office	4,624	429.6
Ground	Reception	1,019	94.7
	Retail	2,132	198
	Ancillary	136	12.7
Basement	Retail	3,081	286.2
Sub Basement	Ancillary	32	3.0
Sub Total office		32,407	3010.7
Sub total retail		5,213	484.2
Ancillary		168	15.7
Building Total		37,788	3,510.6

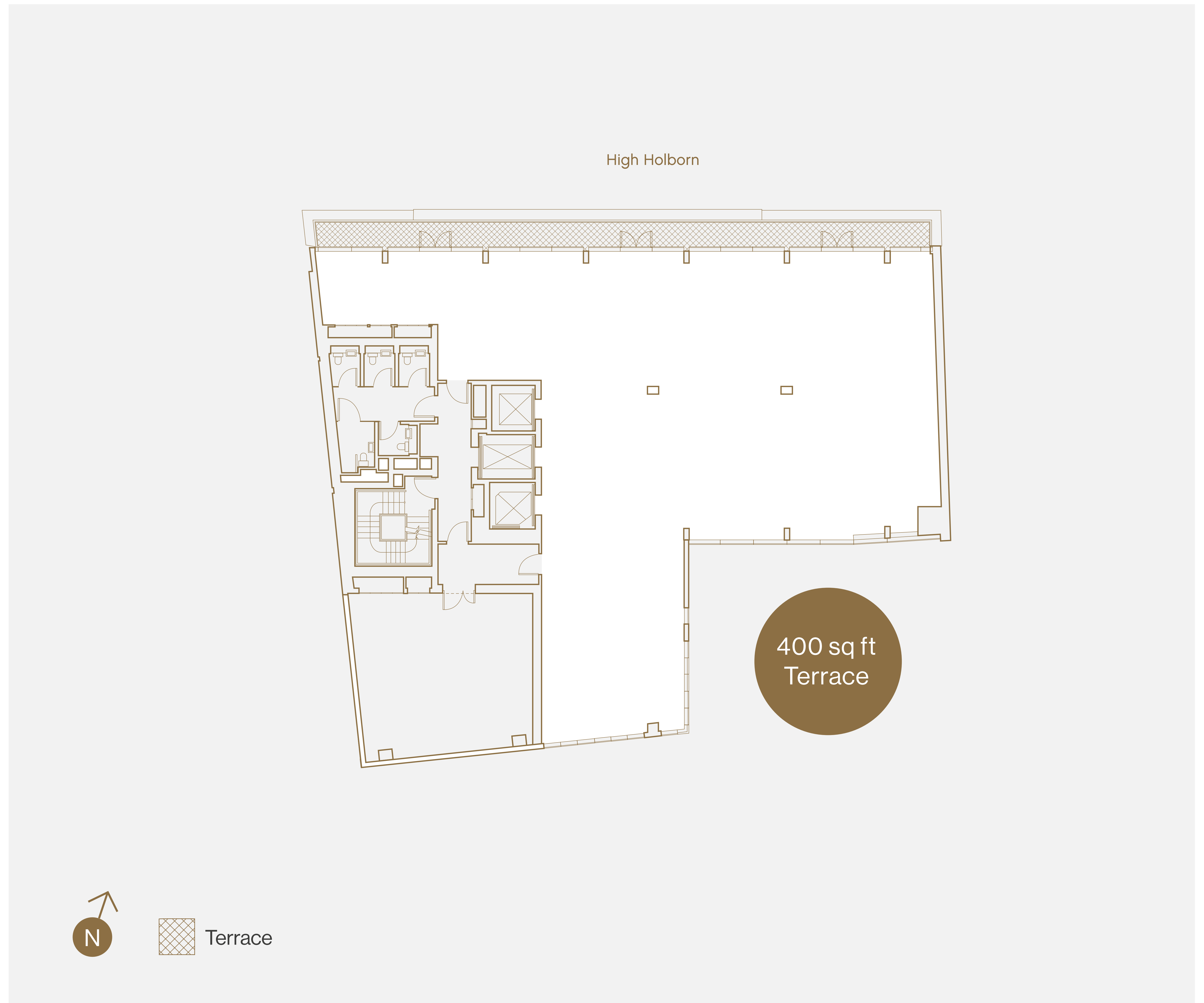


The Property has been measured by Plowman Craven in accordance with the RICS Code of Measuring Practice (sixth edition) and provides the above net internal areas (NIA). Floor plans are indicative only.

Seventh Floor

(plus terrace)
3,517 sqft
326.7 sqm

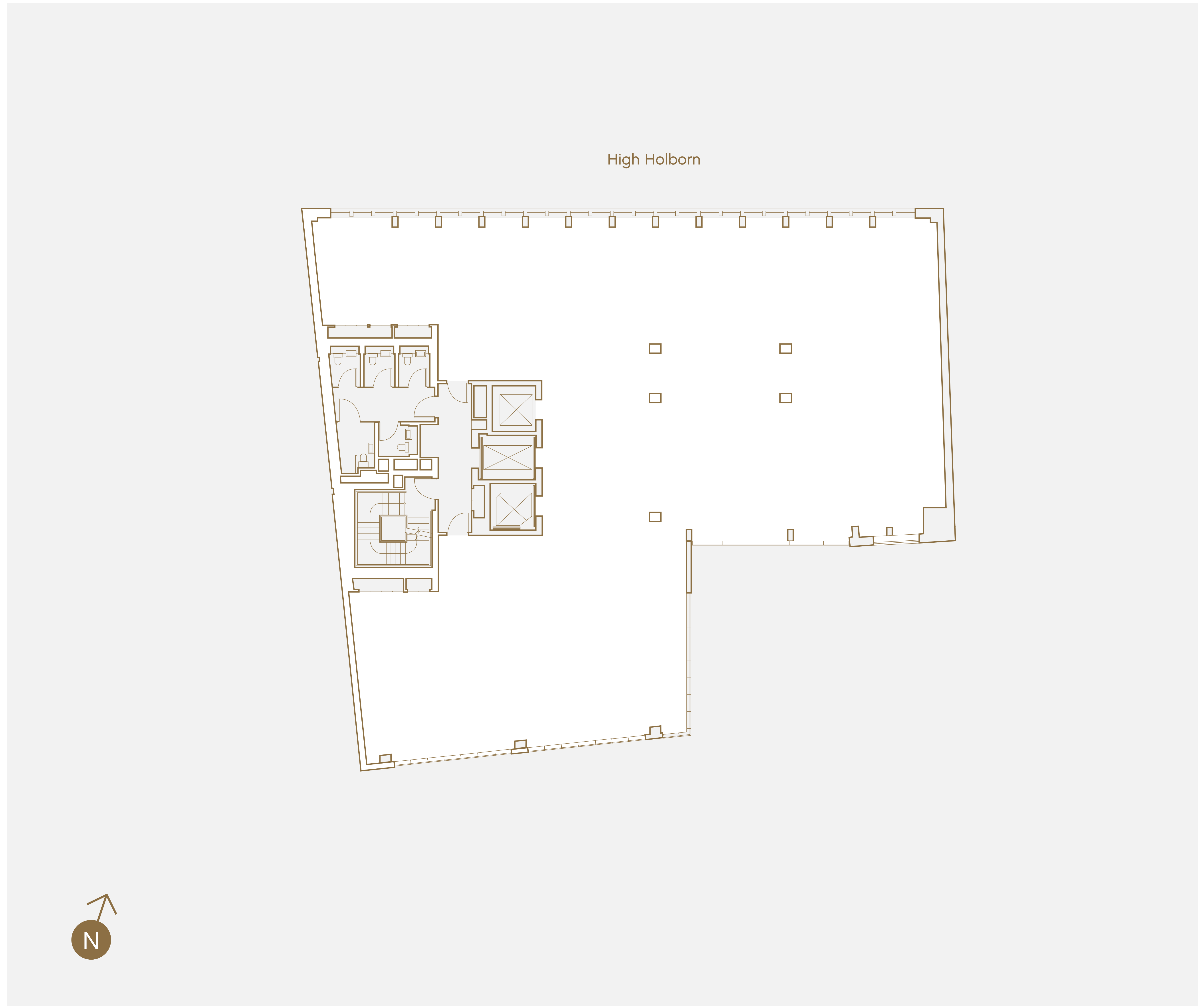
Eighth (plus Terrace)	LET
Seventh (plus Terrace)	3,517
Sixth	4,676
Fifth	4,678
Fourth	4,625
Third	4,637
Second	4,631
First	4,624
Ground (Reception)	0
Basement	0
Sub Basement	0



Sixth Floor

4,676 sqft
434.4 sqm

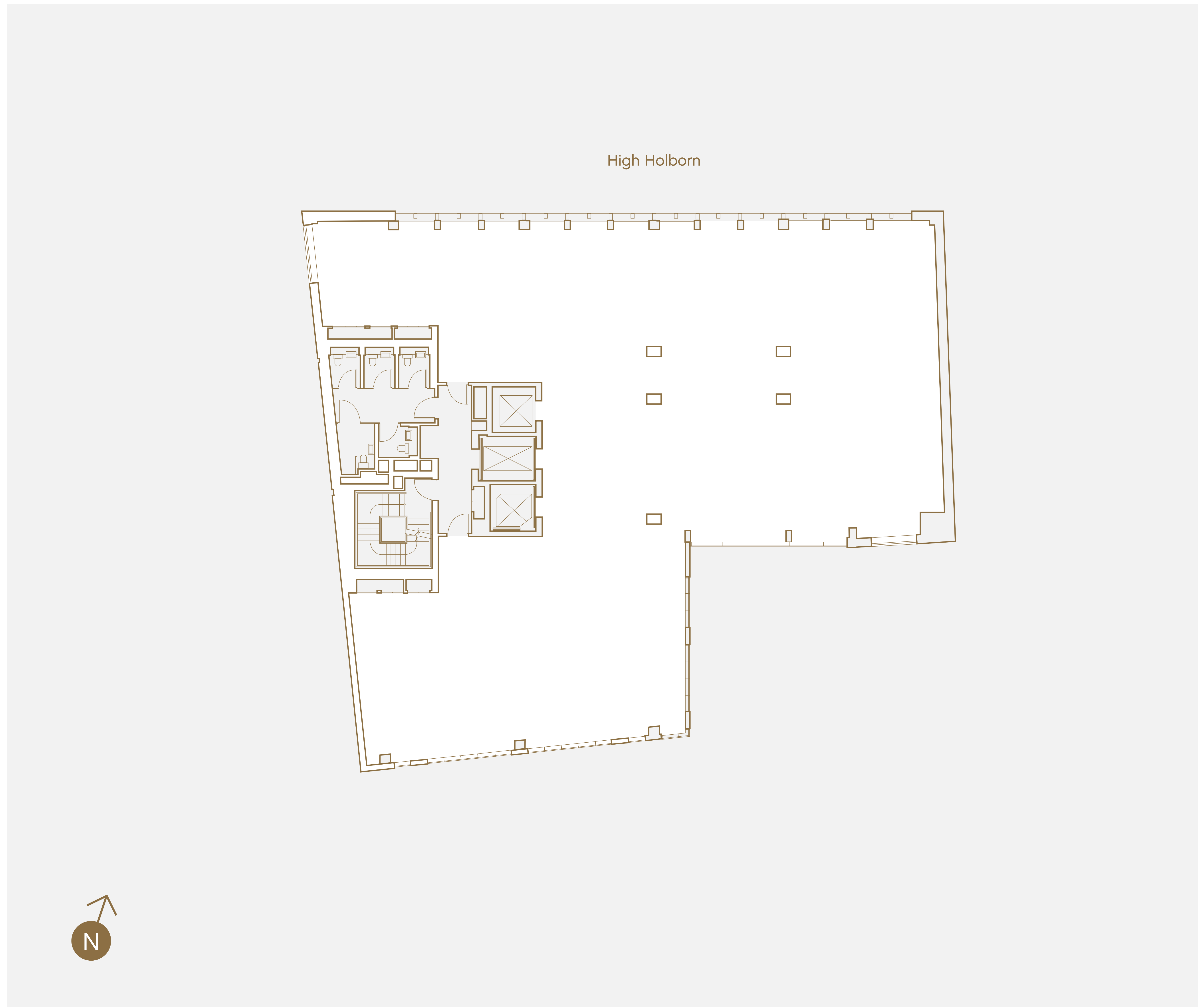
Eighth (plus Terrace)	LET
Seventh (plus Terrace)	3,517
Sixth	4,676
Fifth	4,678
Fourth	4,625
Third	4,637
Second	4,631
First	4,624
Ground (Reception)	0
Basement	0
Sub Basement	0



Fifth Floor

4,678 sqft
434.6 sqm

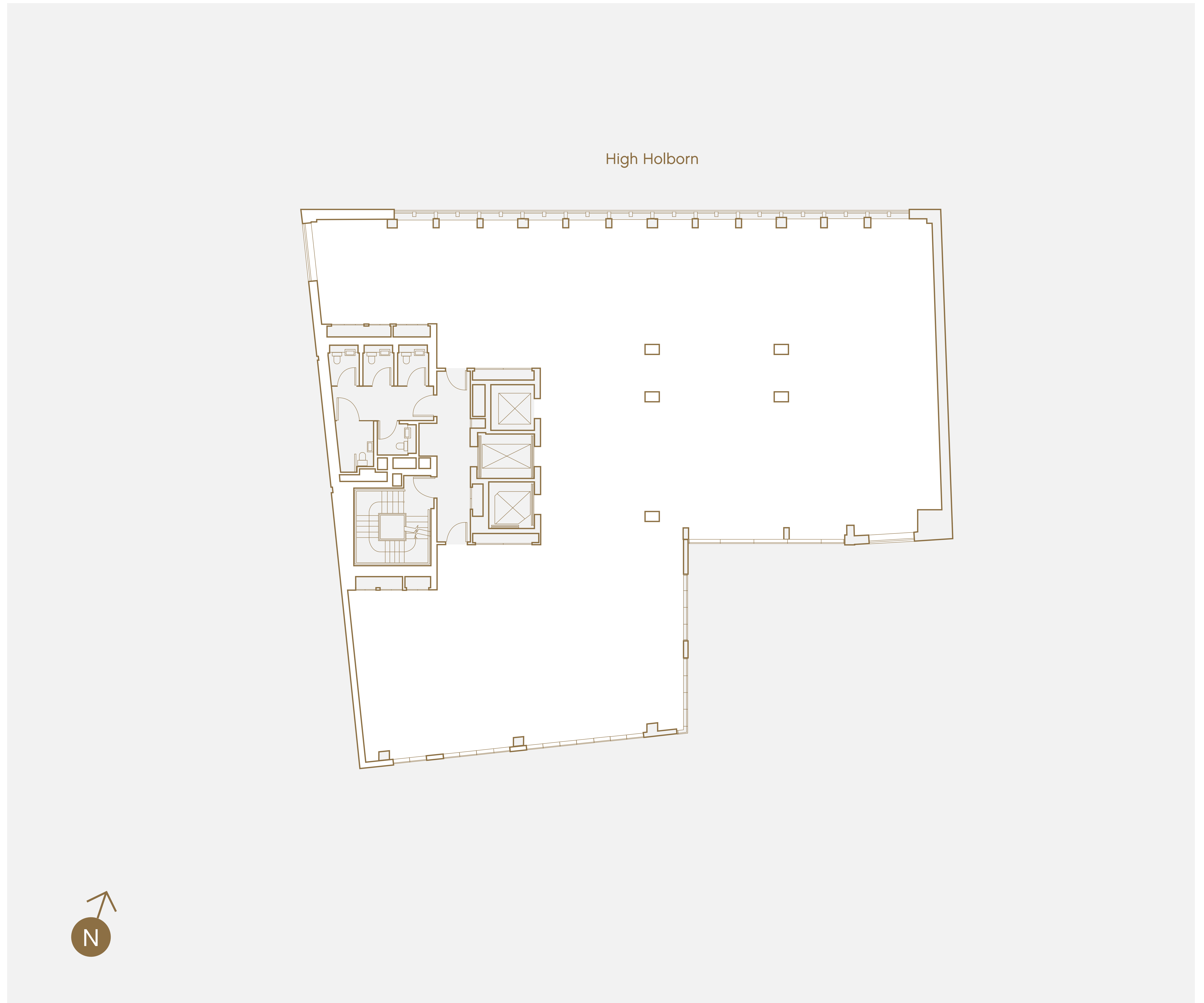
Eighth (plus Terrace)	LET
Seventh (plus Terrace)	3,517
Sixth	4,676
Fifth	4,678
Fourth	4,625
Third	4,637
Second	4,631
First	4,624
Ground (Reception)	0
Basement	0
Sub Basement	0



Fourth Floor

4,625 sqft
429.7 sqm

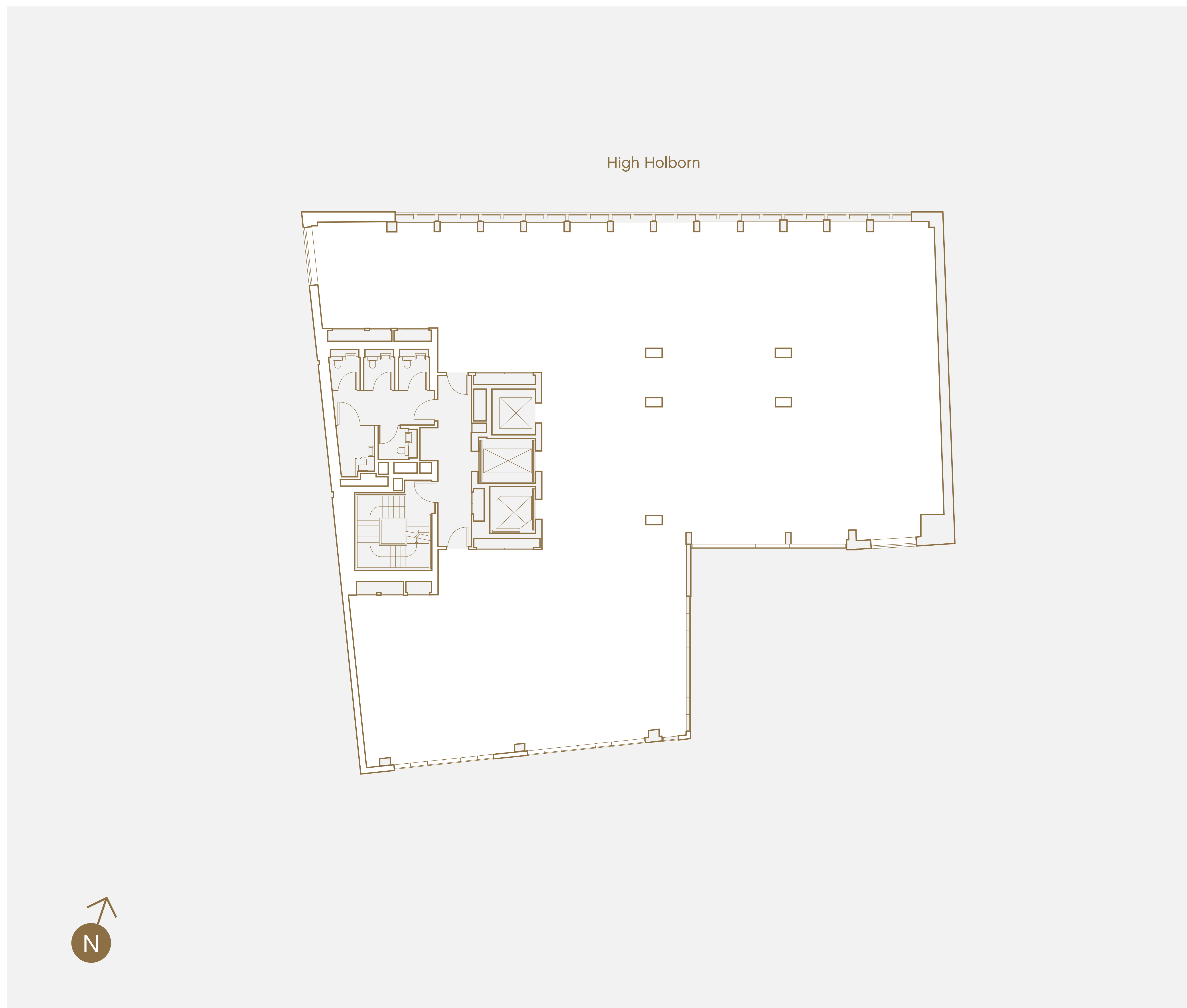
Eighth (plus Terrace)	LET
Seventh (plus Terrace)	3,517
Sixth	4,676
Fifth	4,678
Fourth	4,625
Third	4,637
Second	4,631
First	4,624
Ground (Reception)	0
Basement	0
Sub Basement	0



Third Floor

4,637 sqft
430.8 sqm

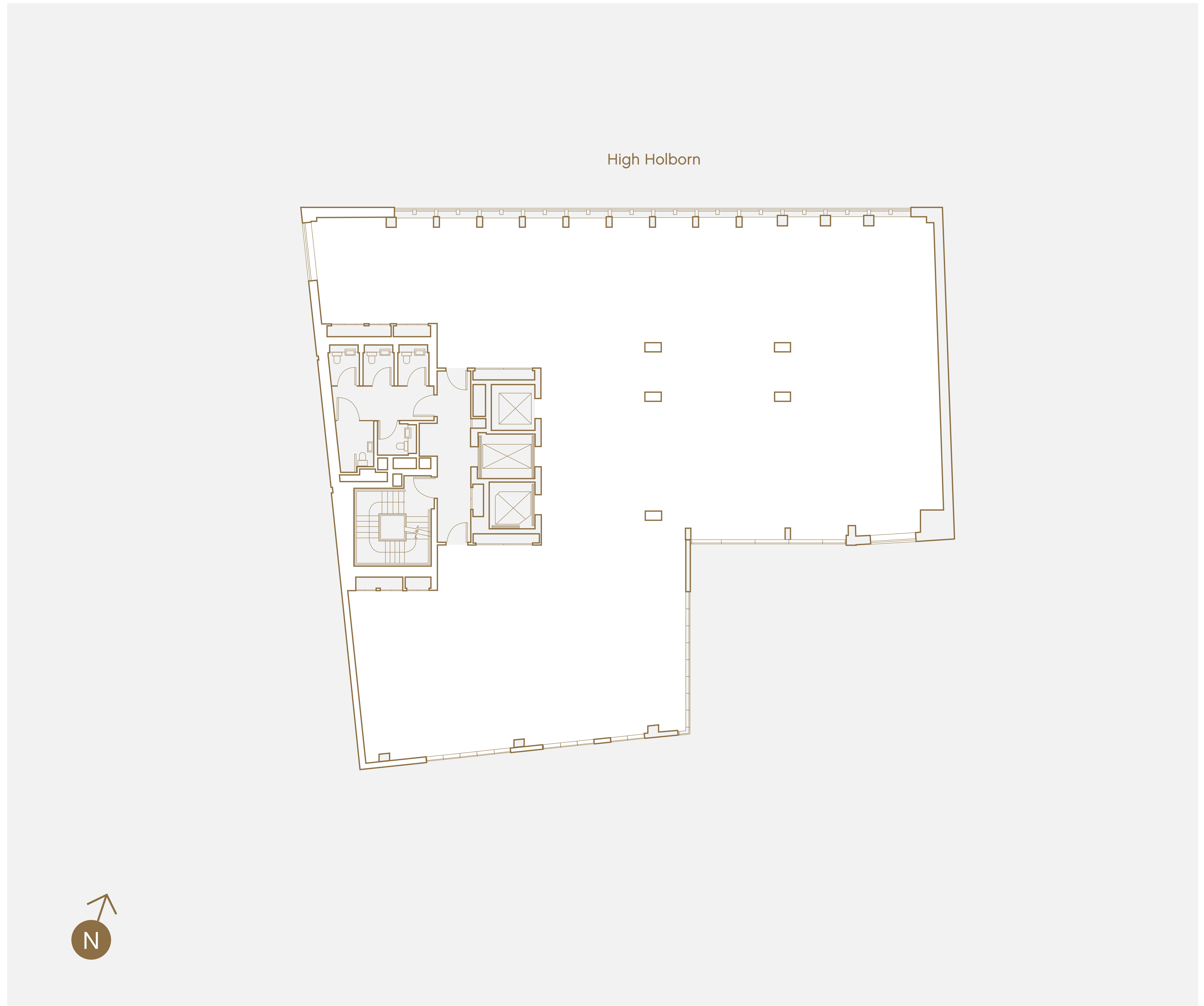
Eighth (plus Terrace)	LET
Seventh (plus Terrace)	3,517
Sixth	4,676
Fifth	4,678
Fourth	4,625
Third	4,637
Second	4,631
First	4,624
Ground (Reception)	0
Basement	0
Sub Basement	0



Second Floor

4,631 sqft
430.2 sqm

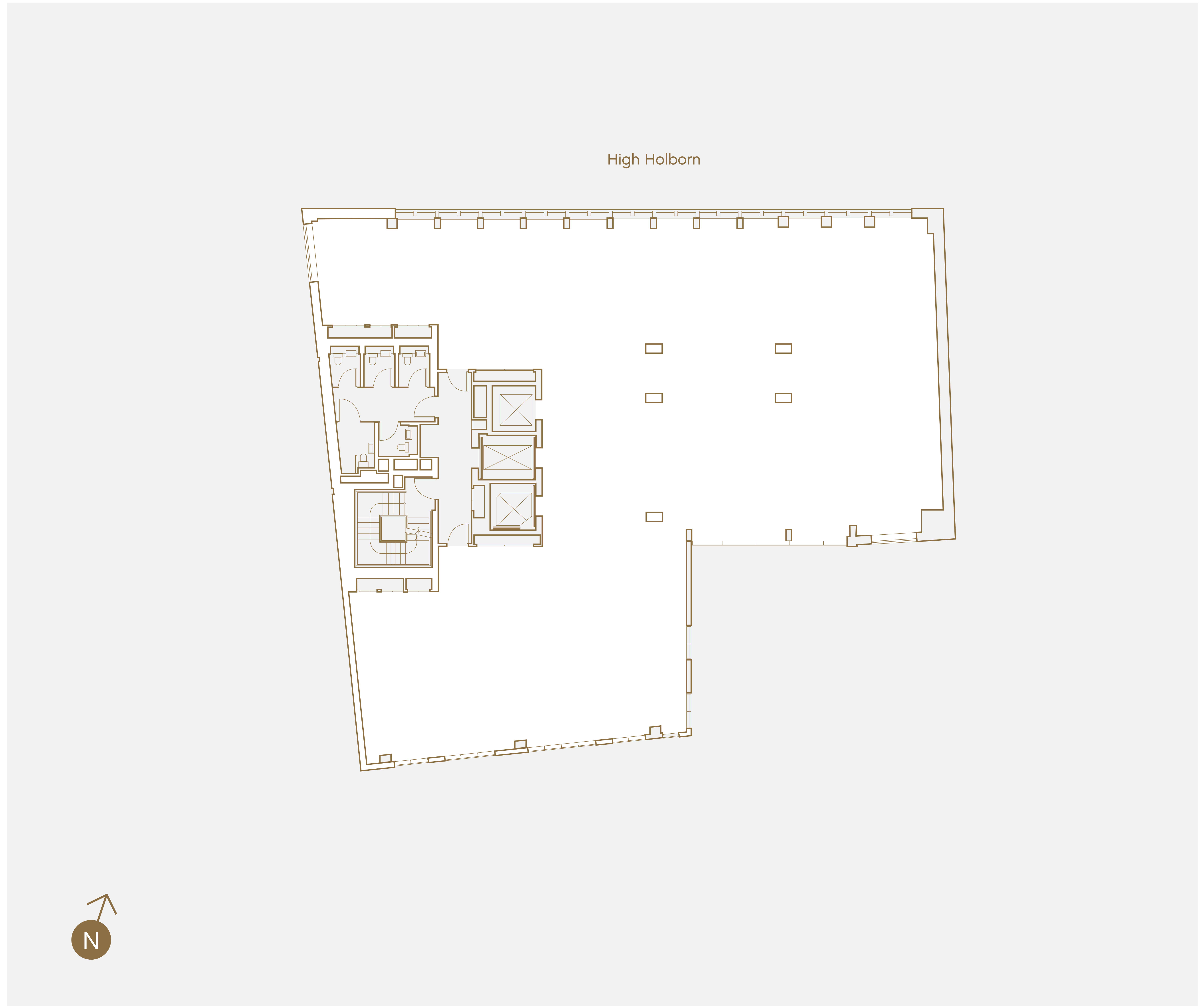
Eighth (plus Terrace)	LET
Seventh (plus Terrace)	3,517
Sixth	4,676
Fifth	4,678
Fourth	4,625
Third	4,637
Second	4,631
First	4,624
Ground (Reception)	0
Basement	0
Sub Basement	0



First Floor

4,624 sqft
429.6 sqm

Eighth (plus Terrace)	LET
Seventh (plus Terrace)	3,517
Sixth	4,676
Fifth	4,678
Fourth	4,625
Third	4,637
Second	4,631
First	4,624
Ground (Reception)	0
Basement	0
Sub Basement	0



Ground Floor

1,023 sqft
95 sqm

Eighth (plus Terrace)	LET
Seventh (plus Terrace)	3,520
Sixth	4,693
Fifth	4,693
Fourth	4,693
Third	4,693
Second	4,693
First	4,629
Ground (Reception)	1,023
Basement	0
Sub Basement	0



Basement

Eighth (plus Terrace)	LET
Seventh (plus Terrace)	3,520
Sixth	4,693
Fifth	4,693
Fourth	4,693
Third	4,693
Second	4,693
First	4,629
Ground (Reception)	1,023
Basement	0
Sub Basement	0



Sub Basement

Eighth (plus Terrace)	LET
Seventh (plus Terrace)	3,520
Sixth	4,693
Fifth	4,693
Fourth	4,693
Third	4,693
Second	4,693
First	4,629
Ground (Reception)	1,023
Basement	0
Sub Basement	0



Second Floor Cellular

4,693 sqft
436 sqm

Area	Number of desks
On-floor reception	1
Cellular	33
Support	2
Open plan	2
Drop down/Break out	0
Meeting rooms	2
Total	39

Occupational efficiency of 1 person per 11.05 sq m



Contact

Professional Team

Architect

Sheppard Robson

Project Manager & QS

CBRE

Structural Engineer

Ramboll

M&E Engineers

Meinhardt

Leasing Agents

allsop

Barney Lewis

+44 (0)20 7543 6742

barney.lewis@allsop.co.uk

James Proctor

+44 (0)20 7588 4433

james.proctor@allsop.co.uk

Richard Townsend

+44 (0)20 7543 6718

richard.townsend@allsop.co.uk

CBRE

Matt Chicken

+44 (0)20 7182 2023

matt.chicken@cbre.com

Lucy Dowling

+44 (0)20 3214 1861

lucy.dowling@cbre.com

Hannah Grint

+44 020 3257 6341

hannah.grint@cbre.com

Developer



Lazari Developments Ltd is part of the Lazari family group of companies which operates across seven estates in Central London.

Our vision is to identify buildings and locations with untapped potential across the city and build an exciting legacy for future generations. In doing so, it is essential we adapt to the spaces we shape, investing in innovation and technology to improve them.

We believe that through creative design and high-quality construction, combined with a commitment to sustainability and wellbeing, we can benefit the local, residential and business communities we serve. Our ambition, to build an exciting legacy for London for future generations to enjoy.

PROPERTY MISDESCRIPTIONS ACT 1991 Allsop, CBRE and their clients give notice that: (i) These particulars do not form part of any offer or contract and must not be relied upon as statements or representations of fact. (ii) No person in the employment of the agent(s) has any authority to make or give any representation or warranty whatever in relation to this property. (iii) Floor areas, measurements or distances given are approximate. Unless otherwise stated, any rents, or outgoings quoted are exclusive of VAT. (iv) Any descriptions given of the property cannot be taken to imply, it is in good repair, has all necessary consents, is free of contamination, or that the services and facilities are in working order. interested parties are advised to carry out their own investigations as required. Designed by Simple Truth. +44 7788 596744. September 2020.

262hh.co.uk